

C1,2C (Col 2 3/4C_{short}) Polyclonal Rabbit Antibody

Product Number 50-1035
Lot R2699

Measurement of type I and II collagen cleavage by collagenases

Size: 100 µL/vial Rabbit Serum

Suggested Working Dilution Range:

Collagen Type II
Immunohistochemistry: 1:100 - 1:500

Collagen Type I
Immunohistochemistry: 1:100 - 1:400

Preservative: No preservative added

Storage/expiration date:

- 1- The serum must be stored at -70°C upon arrival until needed.
- 2- The serum diluted 1:10 with 1% BSA in PBS, pH 7.2 with 0.05% sodium azide can be stored one (1) year at -70°C or three (3) months at 2 - 8°C.
- 3- Larger dilution than 1:10 can be stored one (1) day at 2 - 8°C.

Antibody Specificity: The Col 2 3/4C_{short} antibody detects collagenase cleaved type I and II collagen. More specifically it recognizes the α -chain fragments containing an approximate 8 amino acid sequence at the carboxy terminus of the three-quarter piece produced by collagenase (MMP-1, MMP-8 and MMP-13) cleavage of type II collagen.

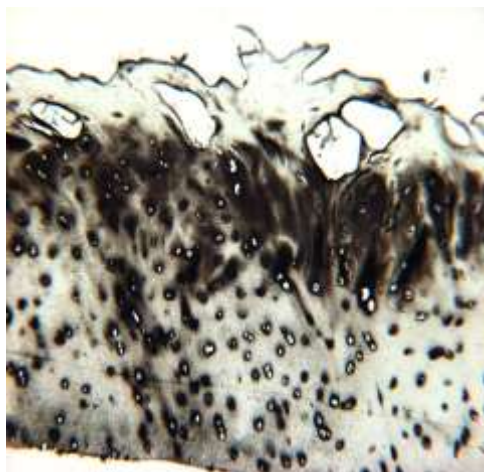
The cleavage neopeptide that this antibody recognizes is mainly conserved across species (human, murine, equine, bovine, etc.) and is shared between type I and type II collagens. Type I collagen is usually absent from hyaline cartilages from many species, except chicken.

For in vitro research only, not for diagnostic or therapeutic use.

References:

- Billinghurst *et al.*, (1997) J. Clin. Invest. 99:1535-1545.
Wolf and Friedl (2005) Biochimie 87 (3-4):315-320.
Van Meurs *et al.*, (1999) Arth. Rheu. 42 :2074-84.

Type II Collagen Cleavage: Staining of Osteoarthritic Human Articular Cartilage



Type II Collagen Cleavage: Staining of Osteoarthritic Human Articular Cartilage in the presence of blocking peptide

