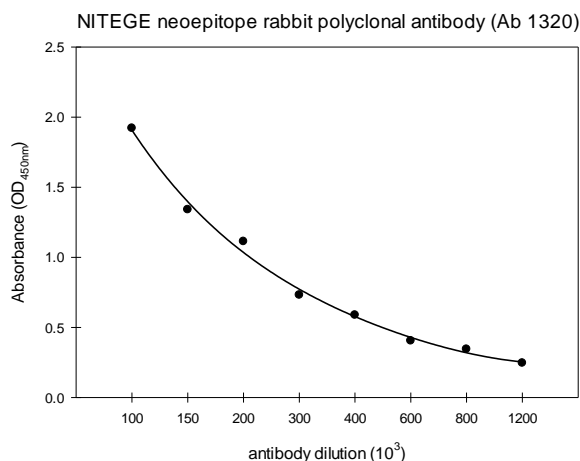


Aggrecan specific NITEGE neoepitope rabbit polyclonal antibody (Ab 1320)

Matrix retained aggrecanase cleavage neoepitope

Product Number 50-1006

Lot R3496

Size: 50 µL/vial Rabbit antiserum**Preservative:** No preservative added**Antibody titer and conditions:****Storage condition:**

Store unthawed product at -70°C until required. Once thawed, unused portions may be diluted 10-fold in PBS, pH 7.2 supplemented with 1% BSA and 0.05% sodium azide. This solution may be stored up to one month at 2 - 8°C or aliquoted and frozen at -70°C for long term storage.

For optimal results, the diluted working antiserum solution should be used within the same day.

Expiry Date: One year from shipping date when kept at -70°C. The 1:10 dilution prepared as recommended is stable for up to one (1) month at 4°C.

Antibody Specificity: ...NITEGE³⁷³ specific Ab. The antibody is highly specific for the sequence NITEGE. Specificity was characterized by competitive ELISA. Reactivities to the truncated and extended peptides were not detected in competitive assays with NITEGE peptide.

Cross Reactivity: Human, rat, mouse, bovine and many others (based on sequence homology). Neoepitope sequence in mouse is ...NVTEGE³⁷³; however this change does not affect antibody cross reactivity.

Notes: Neoepitope generated through aggrecanase activity from G1 domain at ...NITEGE³⁷³. This neoepitope is retained in the matrix after cleavage. Possible glycosylation on N and linkage to keratin sulfate on T can affect aggrecanase ability to cleave at this site and antibody recognition. Age and species specific.

For in vitro research use only. Not intended for diagnostic or therapeutic use.

References:

Lee *et al.*, (2001) Dev. Dyn. 222: 52-70.
Sztrolovics *et al.*, (1997) Biochem. J.326: 235-241.

IBEX Pharmaceuticals Inc.

5485 Paré, Mont Royal, Suite 100, QC H4P 1P7

Tel : 514.344.4004; Fax : 514.344.8827; Website : www.ibex.ca