

C1,2C (Col 2 3/4C_{short}) Polyclonal Rabbit Antibody

Product Number 50-1035

Lot R2699

Measurement of type I and II collagen cleavage by collagenases

Size: 100 µL/vial Rabbit Serum

Suggested Working Dilution Range:

Collagen Type II

Immunohistochemistry: 1:100-1:500

Collagen Type I

Immunohistochemistry: 1: 100- 1:400

Preservative: No preservative added

Storage/expiration date:

1- The serum must be stored at -70°C upon arrival until needed.

2- The serum diluted 1:10 with 1% BSA in PBS, pH7.2 with 0.05% Sodium Azide can be stored 1 year at -70°C or 3 months at 4°C.

3- Larger dilution than 1:10 can be stored 1 day at 4°C.

Antibody Specificity: The COL 2 3/4C short antibody detects collagenase cleaved type I and II collagen. More specifically it recognizes the α -chain fragments containing an approximate 8 amino acid sequence at the carboxy terminus of the three-quarter piece produced by collagenase (MMP-1, MMP-8 and MMP-13) cleavage of type II collagen.

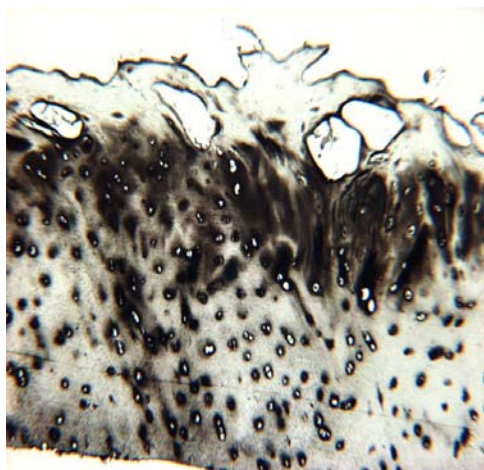
The cleavage neopeptide that this antibody recognizes is mainly conserved across species (human, murine, equine, bovine, etc.) and is shared between type I and type II collagens. Type I collagen is usually absent from hyaline cartilages from many species, except chicken.

For in vitro research only, not for diagnostic or therapeutic use.

References

Billingham *et al.*, (1997) *J. Clin. Invest.* 99:1535-1545.
Wolf and Friedl (2005) *Biochimie* 87 (3-4):315-320.
Van Meurs *et al.*, 1(1999) *Arth. Rheu.* 42 :2074-84,

Type II Collagen Cleavage: Staining of Osteoarthritic Human Articular Cartilage



Type II Collagen Cleavage: Staining of Osteoarthritic Human Articular Cartilage in the presence of blocking peptide

