

Aggrecan specific NITEGE neopeptide rabbit polyclonal antibody (Ab 1320)

Matrix retained aggrecanase cleavage neopeptide

Product Number 50-1006

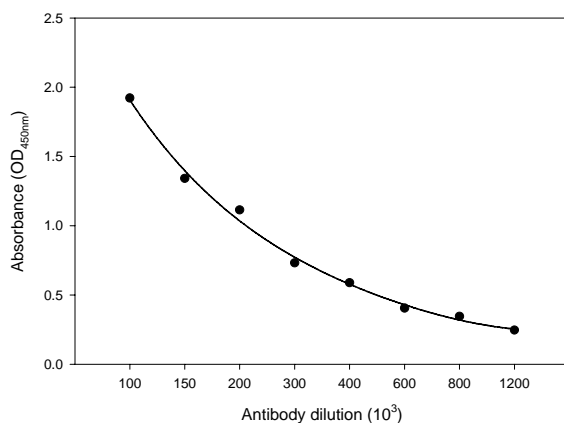
Lot R3496

Size: 50µL/vial Rabbit antiserum

Preservative: No preservative added

Antibody titer and conditions:

NITEGE neopeptide rabbit polyclonal antibody (Ab 1320)



Storage condition: Store unthawed product at -70°C until required. Once thawed, unused portions may be diluted 10-fold in PBS, pH 7.2 supplemented with 1% BSA and 0.05% sodium azide. This solution may be stored up to one month at 4°C or aliquoted and frozen at -70°C for long term storage

For optimal results, the diluted working antiserum solution should be used within the same day.

Expiry Date: One year from shipping date when kept at -70°C. The 1:10 dilution prepared as recommended is stable for up to one month at 4°C.

Antibody Specificity: ...NITEGE³⁷³ specific Ab. The antibody is highly specific for the sequence NITEGE. Specificity was characterized by competitive ELISA. Reactivities to the truncated and extended peptides were not detected in competitive assays with NITEGE.

Cross Reactivity: Human, rat, mouse, bovine and many others (based on sequence homology). Neopeptide sequence in mouse is ...NVTEGE³⁷³; however this change does not affect Ab cross reactivity.

Notes: Neopeptide generated through aggrecanase activity from G1 domain at ...NITEGE³⁷³. This neopeptide is retained in the matrix after cleavage. Possible glycosylation on N and linkage to keratin sulfate on T can effect aggrecanase ability to cleave at this site and Ab recognition. Age and species specific.

For in vitro research use only. Not intended for diagnostic or therapeutic use.

References:

Lee *et al.*, (2001) Dev. Dyn. 222: 52-70.
Sztrolovics *et al.*, (1997) Biochem. J.326: 235-241.

IBEX Pharmaceuticals Inc.

5485 Paré, Mont Royal, Suite 100, QC H4P 1P7, Tel : 514.344.4004 fax : 514.344.8827